

# **Cantata Pastorale**

per la nascita di Nostro Signore

**Alessandro Scarlatti**

(Italy, 1660 - 1725)

**Violin 1 (transposed down a tone)**

# Violin 1

## 1. Sinfonia

1

3

6 (■ v v)

9

12

15

18

22



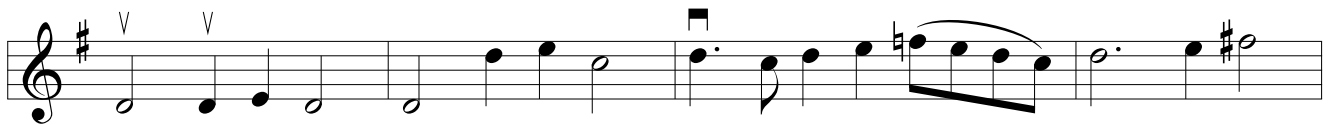
26



30



34

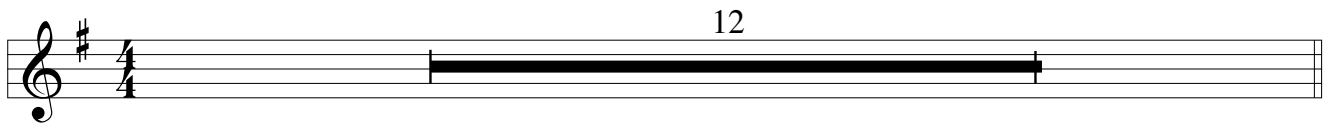


38



## 2. Recitative

42



### 3. Aria (Dal bel seno d'una stella)

57

60

76

79

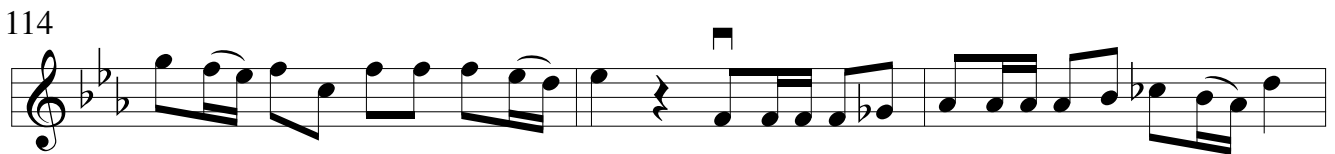
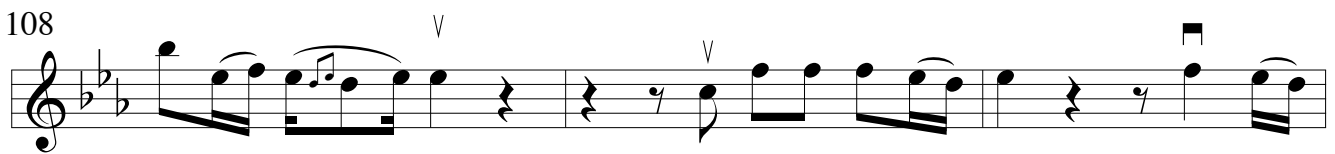
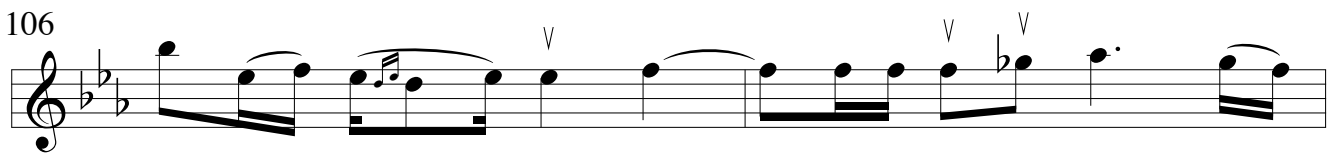
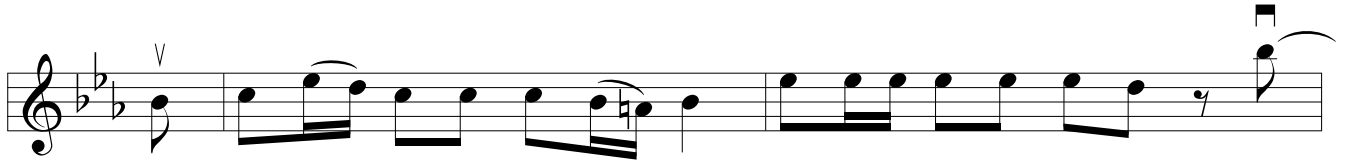
83



89 4. Recitative (Presa d'uomo la forma)



5. Aria (L'autor d'ogni mio bene)



1. 120

123

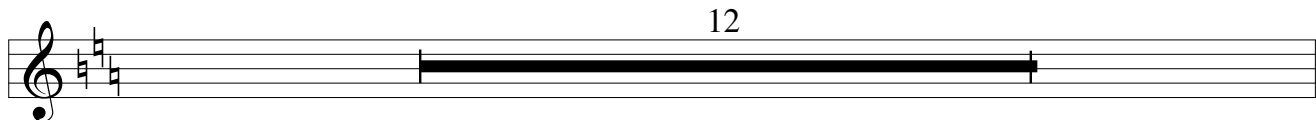
125

128 Da Capo

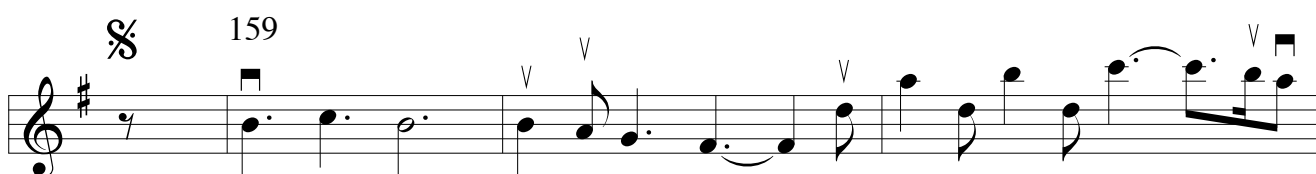
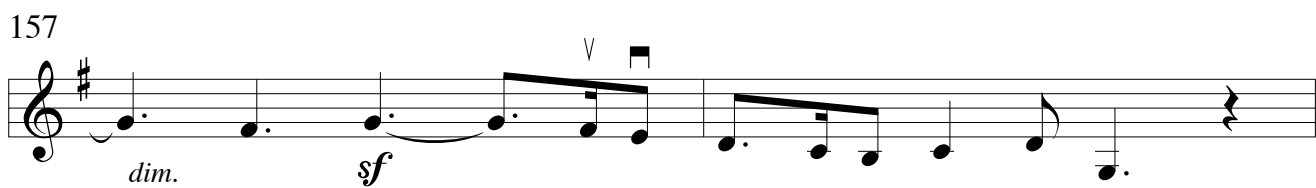
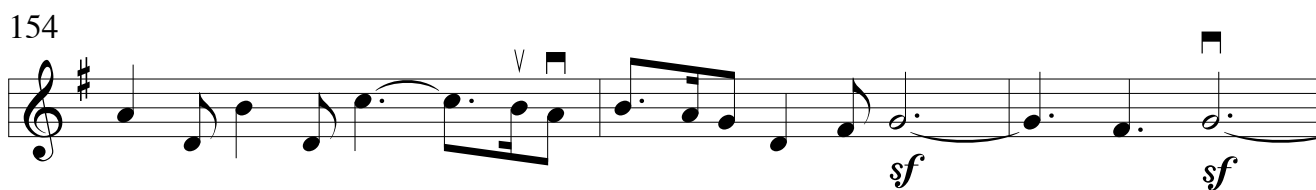
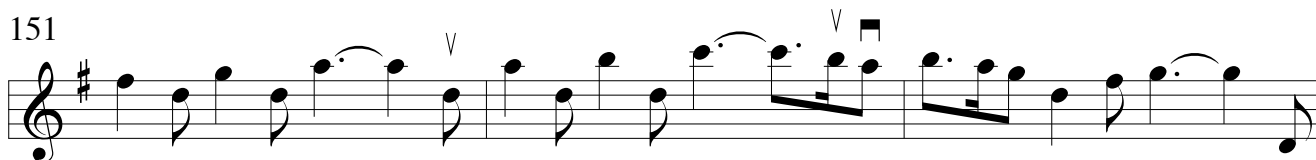
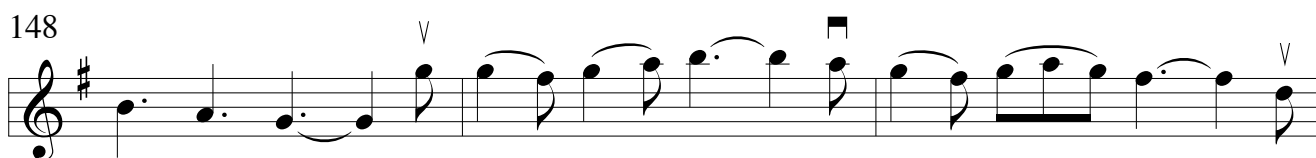
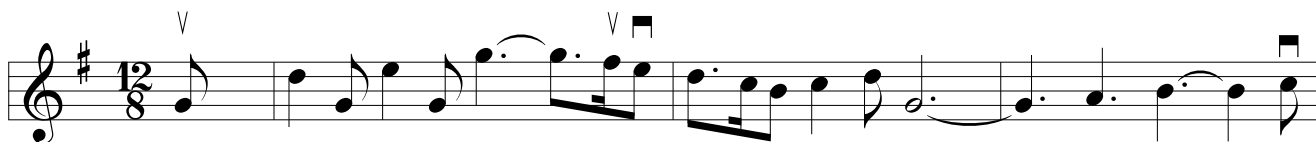
2. 130

## 6. Recitative (Fortunati, fortunati pastori!)

133



## 7. Aria (Toccò la prima sorte)





166

Musical staff 166 in treble clef with a key signature of one sharp (F#). The staff contains a sequence of notes and rests, including several measures with accents (v) and dynamic markings.

169

Musical staff 169 in treble clef with a key signature of one sharp (F#). The staff contains a sequence of notes and rests, including a measure with a fermata (o) and dynamic markings (p) and (f).

172

Musical staff 172 in treble clef with a key signature of one sharp (F#). The staff contains a sequence of notes and rests, including a measure with a fermata (o) and the instruction "last time, to Coda" with a Coda symbol.

175

Musical staff 175 in treble clef with a key signature of one sharp (F#). The staff contains a sequence of notes and rests, including several measures with accents (v).

178

Musical staff 178 in treble clef with a key signature of one sharp (F#). The staff contains a sequence of notes and rests, including a measure with a fermata (o) and several measures with accents (v).

181

Musical staff 181 in treble clef with a key signature of one sharp (F#). The staff contains a sequence of notes and rests, including several measures with accents (v).

185

Musical staff 185 in treble clef with a key signature of one sharp (F#). The staff contains a sequence of notes and rests, including a measure with a 12/8 time signature and several measures with accents (v).

189

Musical staff 189 in treble clef with a key signature of one sharp (F#). The staff contains a sequence of notes and rests, including several measures with accents (v) and the instruction "Dal Segno" at the end.

To avoid page turn, simply play the introduction (bars 145 - 158) again.

♩ Coda

195

198

201

204